

Morges 22 - Crissier - retail space of approx.
330 m²

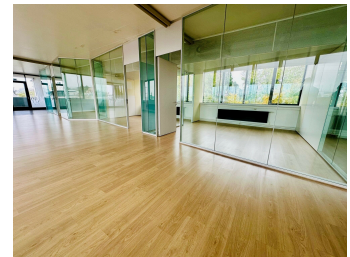


Rue de Morges 22
1023 Crissier
Reference: Morges 22 - surface 2ème étage 320 m²

MORGES 22 - CRISSIER - RETAIL SPACE OF APPROX. 330 M2

CHF 7'150.- / month + ch.

CH-1023 Crissier, Rue de Morges 22



Description

Ideally located in the Crissier commercial area, close to motorways, in a commercial building, we offer :

- Approx. 330m² with
- approx. 18m² terrace, WC available
- A warehouse of approx. 35m² in addition

Fixtures and fittings to tenant's liking.

This bright, well-distributed space is ideal for office use.

Rents are as follows:

- Commercial space of approx. 330 m2 : CHF 7'150 excl. tax/month (CHF 260/m2/year)
- Down-payments and ancillary costs: CHF 1'100 excl. tax/month (CHF 40/m2/year)
- Basement warehouse of approx. 35 m2: CHF 500 excl. tax/month

8 indoor parking spaces are available for rent at a monthly rate of CHF 150.

Prices do not include taxes.

Characteristics

Reference : Morges 22 - surface

2ème étage 320 m2

Type : Office

Floor : 2nd floor

Useful surface : ~ 330 m²

Year of construction : 2004

Service costs : Instalment (CHF

1'100.-/month)

Availability : To be discussed

Contact for visiting

Mrs. Gérance VAUD
E-mail : gerancevd@vpi-sa.ch
Phone : +41 58 590 30 60

Characteristics

Reference	Morges 22 - surface 2ème étage 320 m2	Floor	2nd floor
Useful surface	~ 330 m ²	Year of construction	2004
Availability	To be discussed	Service costs	Instalment (CHF 1'100.-/month)
Parking places	Yes, optional		

Conveniences

Condition

- Planned works

Pictures





