

## Gland - 199 m2 warehouse

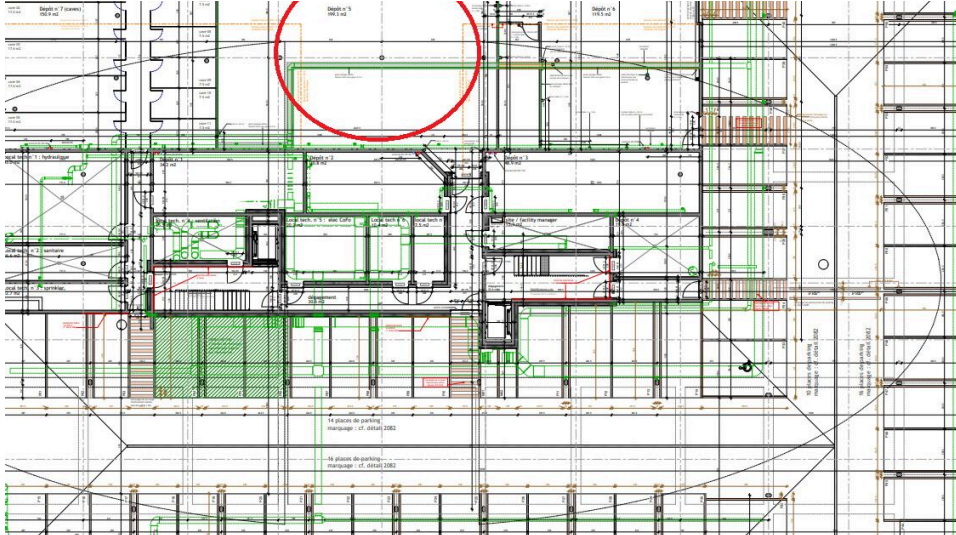


Chemin du Vernay 14  
1196 Gland  
Reference: Ellipse - Dépôt 5

## GLAND - 199 M2 WAREHOUSE

CHF 1'800.- / month

CH-1196 Gland, Chemin du Vernay 14



### Description

Ideally located close to the Gland railway station, this 199 m<sup>2</sup> depot would be ideal for a local company in need of storage space, an archive room or similar.

A parking space can be rented separately with the depot.

Available immediately.

Rent is exclusive of taxes

### Contact for visiting

Mrs. Gérance VAUD  
E-mail : gerancevd@vpi-sa.ch  
Phone : +41 58 590 30 60

### Characteristics

Reference : Ellipse - Dépôt 5

Type : Depot

Floor : 1st basement

Useful surface : ~ 199 m<sup>2</sup>

Service costs : Not specified

Availability : To be discussed

---

### Characteristics

Reference	Ellipse - Dépôt 5	Floor	1st basement
Useful surface	~ 199 m <sup>2</sup>	Availability	To be discussed
Service costs	Not specified		

Pictures

