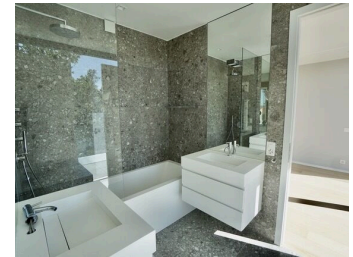




1222 Vézenaz
Reference: Penthouse - Vesenz

CHF 9'000.- / month + ch.

CH-1222 Vézenaz



Description

Built in 2019, the luxuriously finished VIDA residence enjoys an exceptional living environment, right next to the center of Vézenaz. It will win you over with its elegant, high-standard style.

Benefiting from sunshine thanks to its south-western exposure, VIDA offers a 119 m2 penthouse apartment with a 130m2 private terrace with jacuzzi and lake view.

This penthouse comprises :

- entrance with cupboards,
- fully-equipped modern open kitchen with central island (steam oven, conventional oven, dishwasher, induction hob, refrigerator, freezer)
- a large living room with wood-burning fireplace and access to a superb 130m2 terrace with jacuzzi and lake view,
- a master bedroom with dressing room, en suite shower room and toilet, lake view,
- 2 bedrooms with connecting bathroom/wc, pool view,
- guest wc.

A cellar and 1 parking space (included) complete this property.
Possibility of renting a 2nd parking space for an additional CHF 250.
Private laundry room.

As with all "LP" developments, tenants benefit from top-quality amenities, including an outdoor swimming pool, communal garden and gym.
Monthly utilities and jacuzzi maintenance not included.

Elevator in the building

Contact for visiting

Mrs. Céline PUPPIN
E-mail : celine.puppini@vpi-sa.ch
Phone : +41 58 590 30 30

Characteristics

Reference : Penthouse - Vesenzaz
Type : Attached house
Number of rooms : 5
Number of bedrooms : 3
Number of bathrooms : 2
Year of construction : 2019
Service costs : Instalment (CHF 325.-/month)
Availability : Immediately
Inside parking place/s : 1 included

Characteristics

Reference	Penthouse - Vesenaz	Number of rooms	5
Number of bedrooms	3	Number of bathrooms	2
Year of construction	2019	Availability	Immediately
Service costs	Instalment (CHF 325.-/ month)	Inside parking place/s	1 included

Distances

Shops	73 m	Public transports	5 m
Primary school	490 m		

Conveniences

Neighbourhood

- Village
- Green
- Residential area
- Shops/Stores
- Bank
- Restaurant(s)
- Bus stop

Pictures

