

Crissier - Arcade of approx. 230m² for restoration



Morges 22
1023 Crissier
Reference: Morges 22 - Fleur de pain

CRISSIER - ARCADE OF APPROX. 230M2 FOR RESTORATION

CHF 6'460.- / month + ch.

CH-1023 Crissier, Morges 22



Description

Come and discover this beautiful 230m2 arcade in Crissier.

The space is currently occupied by a bakery and can therefore accommodate fast-food activities.

The space is fully glazed, giving good visibility from the road. Many offices and shops are located in the vicinity. Independent ventilation, grease trap and professional kitchen are already in place.

A terrace runs alongside a small stream. There are 11 outdoor parking spaces in front of the surface, and the signs have already been approved by the authorities. Finally, the property is leased with a basement storage area of approx. 60m2.

Please do not hesitate to contact us for further information

Characteristics

Reference : Morges 22 - Fleur de

pain

Type : Arcade

Floor : Ground floor

Surface of parcel : ~ 228 m²

Service costs : Instalment (CHF

760.-/month)

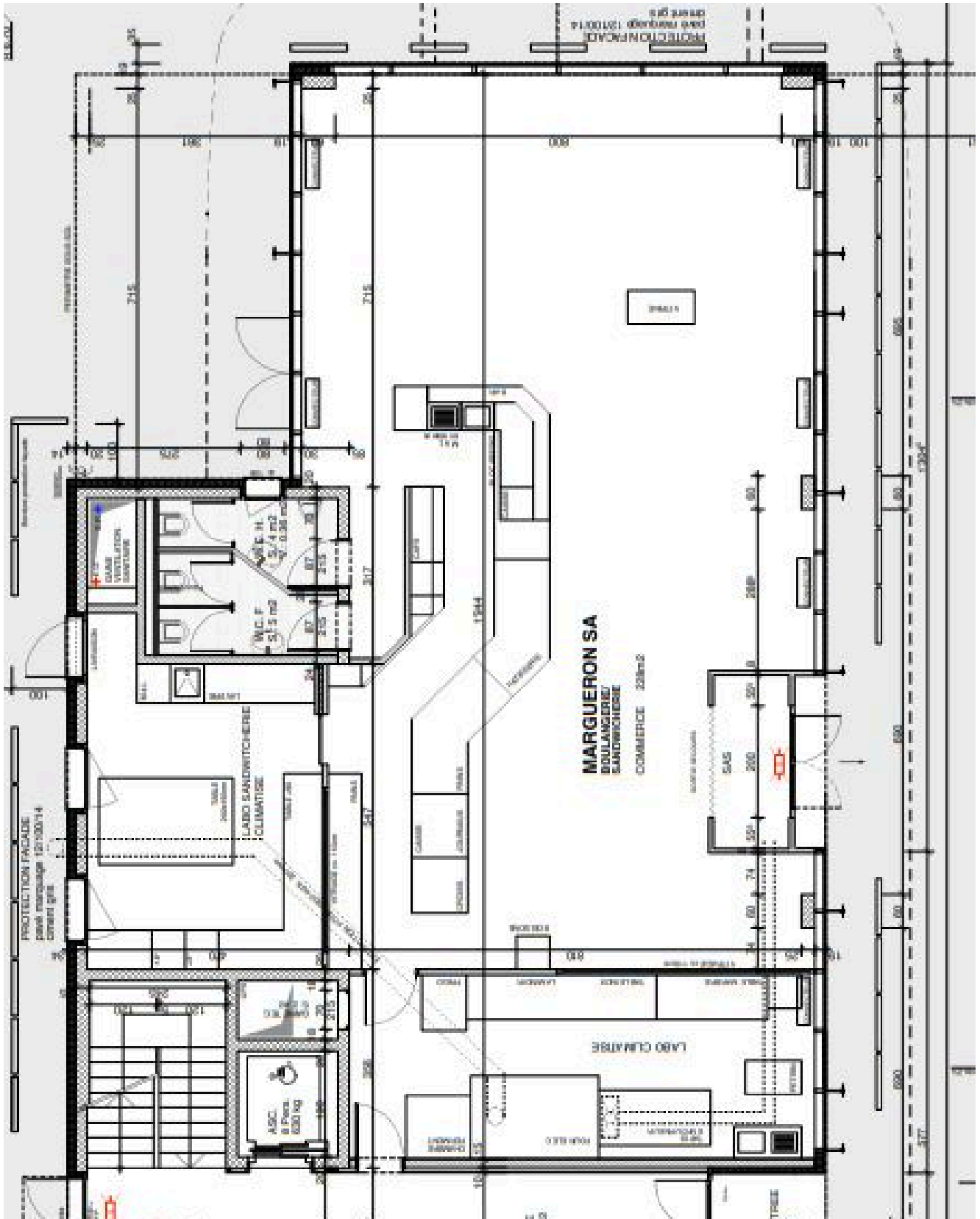
Availability : To be discussed

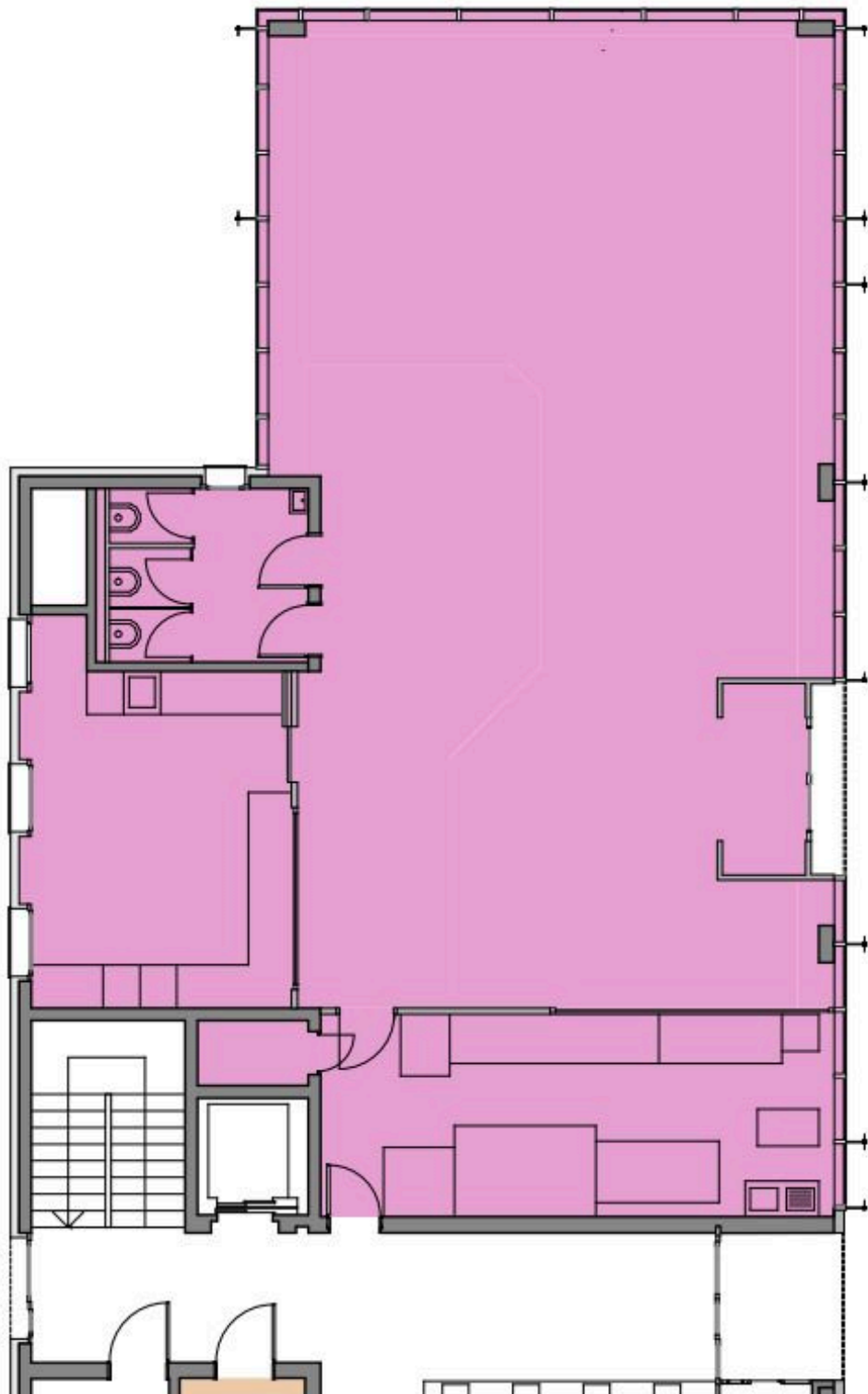
Outside parking place/s : 11

CHF 880.- not included

Characteristics

Reference	Morges 22 - Fleur de pain	Floor	Ground floor
Surface of parcel	~ 228 m ²	Availability	To be discussed
Service costs	Instalment (CHF 760.-/month)	Outside parking place/s	11 CHF 880.- not included





Exterior view





Interior view



Exterior view

